



INTERNATIONAL BACCALAUREATE CAREER-RELATED PROGRAMME (CP)



Philosophy - An innovative and flexible programme designed to cater for a particular passion or interest

Gen Zalphas are growing up in a rapidly changing world. They have digital independence and become physically, socially, psychologically, educationally, and commercially sophisticated at a younger age than previous generations. Therefore, Gen Zalphas like to **learn in new and different ways** and they now demand **voice, choice and agency in what, how, where and when they learn**. Social connectedness and mental health is increasingly a challenge for this generation and therefore learning about themselves, maintaining their own connections and prioritising **work-life-wellbeing balance** is vital. They will live longer and therefore maintaining physical health and wellbeing will also be crucial to a happier and healthier life.

The world of work is evolving - this generation will hold multiple jobs over multiple different careers and are more likely to have a side-hustle. They will seek to engage in education throughout multiple stages of life (not just as a school-leaver) and seek continuous re-training opportunities as they work into their 70s. This will impact this generation financially - education is expensive beyond schooling years and therefore access to upskilling via new ways of learning such as micro credentialing will become increasingly popular and valued. Affordability of housing and living will be more of a challenge so opportunities to **'earn while they learn'** may be more important.

Gen zalphas' purpose for working will also change - they will **seek more purpose, meaning and fulfilment** from their jobs and careers than generations did previously, and place less importance on remuneration. Equipping this generation with the **competencies to adapt, succeed and thrive in this new world** is now pivotal for educators. For more information about the predictions for Gen Alpha see <https://mccrindle.com.au/>

Type of learning

| | |
|---|---------------------------------|
| Both on and off campus | Academic and Practical learning |
| Contributive/Service learning | Collaborative |
| Refining competencies for the workplace | Reflective |
| Real-world | Personal inquiries |
| | Mentoring from adults |

Types of Learner

| | |
|--|----------------------|
| Keen to explore an interest or passion | Enjoys connection |
| Critical & Creative thinkers | Innovative |
| Service-minded | Empathetic/Inclusive |
| Inquirers | Becoming independent |
| Thinks globally, acts locally | |

Secondary school experiences

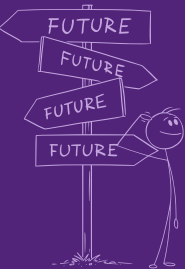
- Choice of subjects that match your passion or interests
- Personal and Professional Skills (PPS) course
- Contributive/Service Learning
- Individual Reflective Project
- Visits to workplaces and work experiences

What makes this option unique?

- Agency - choice, voice and co-design of some of the learning
- Personalised to your interests right now
- 'Real world' learning partners and learning opportunities
- Language development and cultural awareness of your choice
- Industry networks developed giving a competitive edge

Possible next steps in year 13

Outcomes



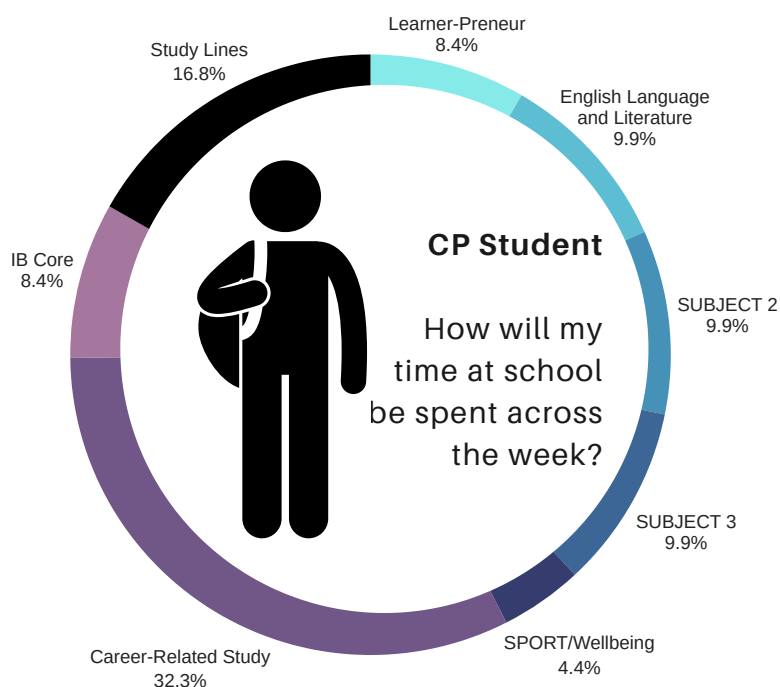
| | | | | |
|---------------------|----------------------------------|------------|----------|-----------------------|
| University* or TAFE | Earn & learn using qualification | Employment | Gap year | Endless possibilities |
|---------------------|----------------------------------|------------|----------|-----------------------|

- Selection Rank*
- QCE

Subjects Offered

| Group 1 | Group 2 | Group 3 | Group 4 | Group 5 | Group 6 | IB Core |
|--|------------------------|--|--|--------------------------|---|---|
| English Language & Literature Literature & Performance* | Spanish Chinese | Psychology Global Politics Business Management Philosophy ESS* | Biology Chemistry Physics Sports, Exercise & Health Science Design Computer Science ESS* | Maths AI Maths AA | Film Visual Art Literature & Performance* | Extended Essay (EE) Theory of Knowledge (TOK) Creativity, Activity, Service (CAS) |

Sample Weekly Timetable



CORE:
Personal & professional skills, service learning, reflective project and language development

CAREER-RELATED STUDY:
(On or off campus)
Certificate course, traineeship or apprenticeship, mentoring, placement, learning, active workplace engagement

Your Commitment to Growth & Success

Attendance = achievement. Research informed data states that high attendance is one of the precursors for high achievement.

Academia = habits and routines. Good learners have developed or working hard on developing time management, organisational skills, meeting all deadlines, asking good questions and seeking feedback and being active learners in class to have agency and success in their courses. This is often measured through effort and behaviour.

PRE-REQUISITES

For students to select this pathway due to the pace and rigour of learning, students must have:

- 90% attendance or higher in Year 10,
- Achieve B's or higher in the Year 10 subjects aligned to their chosen CP pathway, including English
- Receive good or very good effort and behaviour
- Be demonstrating and committing to good learning habits, eg. meeting all deadlines



<https://www.ibo.org/news/news-about-the-ib/ib-and-tafe-queensland-build-new-partnership-in-australia/>

IB Home / News / News about the IB / IB and TAFE Queensland Build New Partnership in Australia

IB and TAFE Queensland Build New Partnership in Australia

Published: 27 September 2024 Last updated: 04 October 2024

Popular Certificate Courses for Career-Related Study

[Certificate IV in Entrepreneurship and New Business](#)

[Certificate II in Sport Coaching](#)

[Certificate III in Screen and Media](#)

[Certificate III in Information Technology](#)

[Certificate II in Autonomous Technologies](#)

[Certificate II in Health Support Services](#)

The International Baccalaureate (IB) will sign a memorandum of understanding (MOU) with TAFE Queensland and Brisbane South State Secondary College to advance career-ready education in Australia.

[TAFE Queensland](#) is a provider of technical and further education. [Brisbane South State Secondary College \(Brisbane South SSC\)](#) educates students at the secondary level to cultivate an environment that fosters academic excellence and the development of essential life skills, both personal and professional.

As part of the new partnership, Brisbane South SSC will introduce the IB's Career-related Programme (CP), maintaining academic rigour while preparing students for a complex world. Through this new collaboration, the school aims to prepare students for both higher education and their chosen career paths, developing students' skills in critical and creative thinking, problem-solving, and global citizenship.

To accomplish this goal, TAFE Queensland will become an official career-related studies strategic partner, offering a selection of courses that will form part of the IB CP Career-related Study (CRS) components that distinguish the CP curriculum. TAFE Queensland will support Brisbane South SSC in implementing the CRS programmes, while the IB will offer guidance and expertise throughout the implementation process of the CP.

As a result, students will gain exposure to real-world career applications in their chosen fields, develop essential workplace skills, and graduate with a solid foundation for success.

Together, leaders from all three entities will report on best practices to serve as a resource for future collaborations. In addition to providing professional development opportunities to educators, this partnership with the IB will contribute to a more skilled and future-ready workforce in the region.

Recommended RTOs for VET certificates or School-Based Apprenticeships/Traineeships

[TAFE@School Program](#) - TAFE Queensland
[Tactile Learning](#)
[Mater Education](#)
[Griffith University - Headstart Program](#)
[Aviation Australia](#)